



SUMITOMO

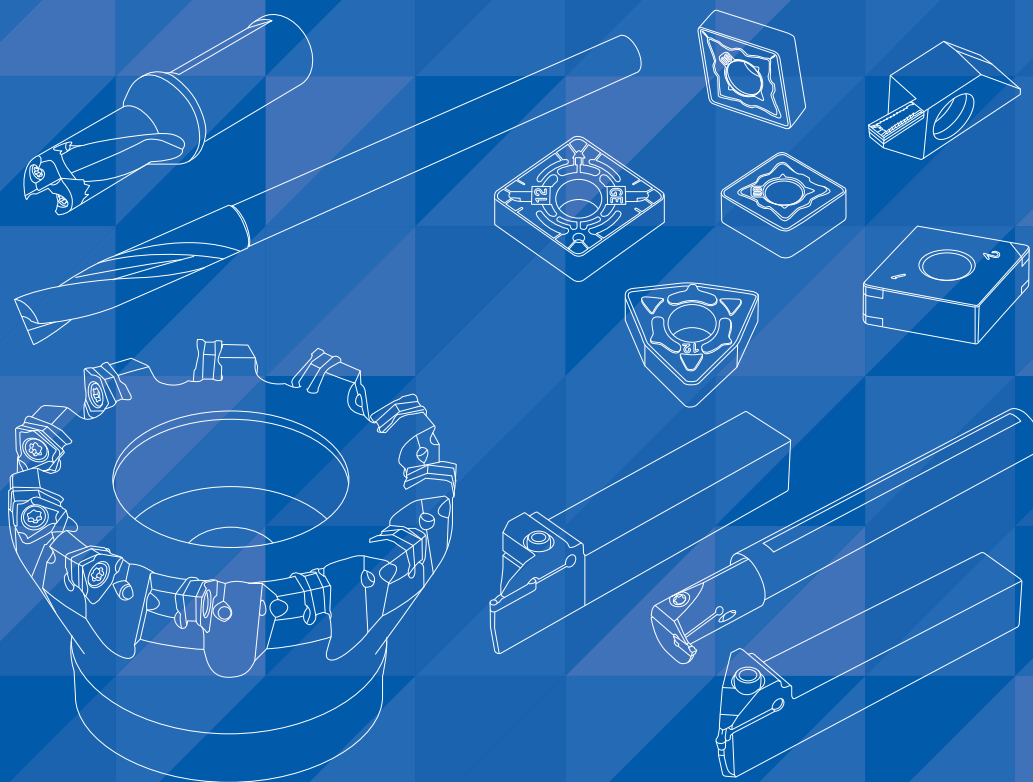
CARBIDE - CBN - DIAMOND

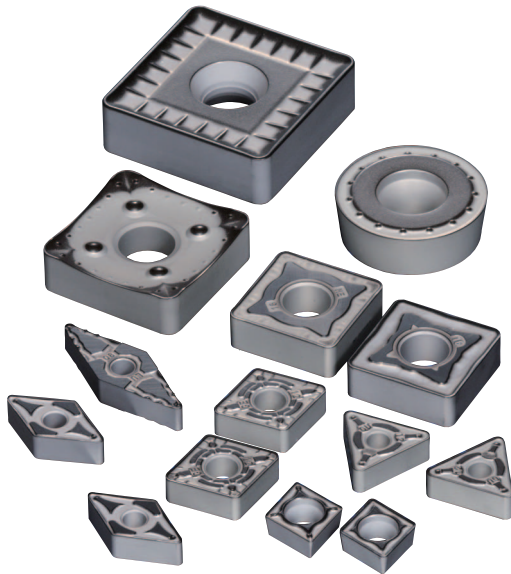
2016 ▶ 2017

NEW PRODUCTS
GUIDANCE

新 产 品 介 绍

- Turning tools
- Milling tools
- Endmills
- Drills



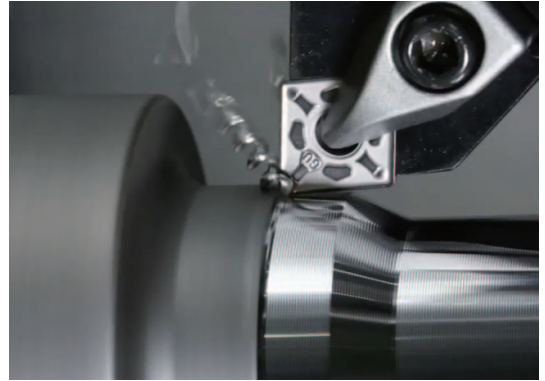


AC8025P

钢件车削加工用材质
Grade for steel turning

采用新开发的硬质合金母材与涂层新技术 ABSOTECH® Platinum，实现了绝对的稳定性。可广泛应用于钢件车削加工的各种场合。

Absolute stability of tool life by newly developed carbide substrate and "ABSOTECH™ Platinum" coating technology. AC8025P can be used in wide application range of steel turning.

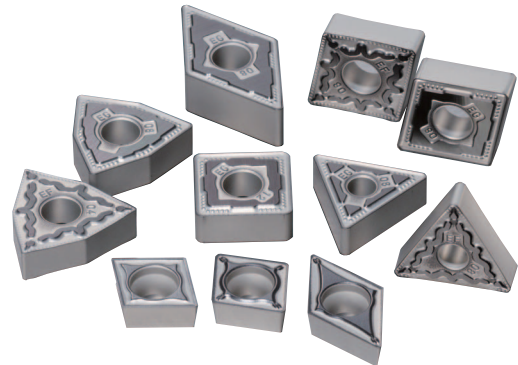


AC6020M

不锈钢车削加工用材质
Grade for stainless steel turning

在AC6030M/AC6040M的基础上，扩充了在高速加工中实现稳定长寿命的AC6020M。在各种不锈钢的加工场合实现更稳定的长寿命，提高了性价比。

An additional grade in AC6000M series, AC6020M, provides long and stable tool life in high speed range. Great improvement in stable tool life and cost reduction can be achieved in various stainless steel turning.



FE 型 / FB 型

精加工用断屑槽 / M级负型刀片
Chip breaker for finishing with negative insert

FE型通过连续改变前角，在从常规到高进给的广泛领域中实现良好的切屑处理。FB型断屑槽大幅改善切削处理性能，可使铁屑更容易分断。

FE type: Excellent chip control in wide range of feed rate, general to high, by continuous change of rake angle.
FB type: Break chips in the condition which is most difficult in chip control, relatively low depth of cut and feed rate.



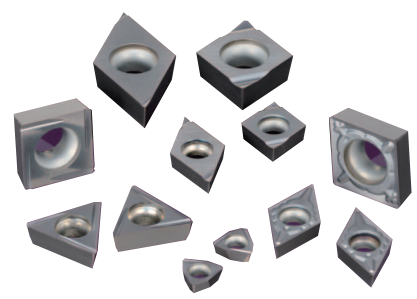


AC1030U

高精度加工用材质
Grade for precision turning

拥有抑制崩损的精致刀尖品质，抑制崩刃这一损伤的起点。采用ABSOTECH® Bronze，在高精度精加工中实现高品质、稳定长寿命。还能广泛适用于不锈钢、耐热钢、纯铁。

A ground insert with ultimate high quality of cutting edge reducing chipping or the origin of damage. High quality and stable tool life can be achieved in high precision turning of stainless steels, heat-resistant alloy and pure iron by "ABSOTECH™ Bronze".



SEC-切槽车刀

GND 型

Grooving tool GND series

可在切槽、切断加工中抑制振刀、实现良好切屑处理的GND型不断扩充新系列。

Further series expansion of GND type, which shows excellent performance in reducing vibration or in chip control, is continuously proceeding to cover wider application range.

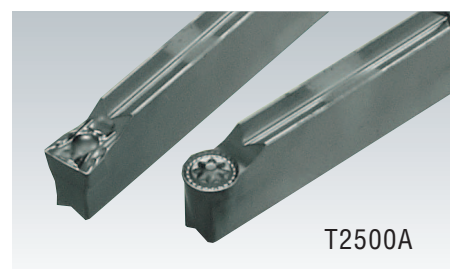


T2500A 仿形加工

T2500A

针对切槽新开发的金属陶瓷材质。实现光泽的精加工面。耐磨损性、耐崩损性比以往产品大幅提高，不仅是切槽，还可以用于横向进给，仿形加工。

Newly developed cermet grade for grooving provides shining surface finish. It can be used for axial turning and profiling safely due to great improvement of wear and chipping resistance.



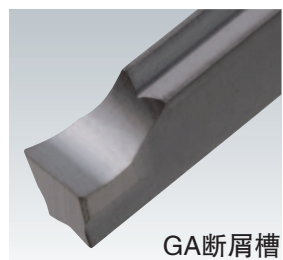
T2500A

非铁金属加工用GA断屑槽

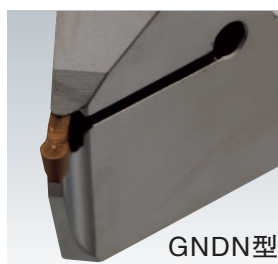
GA breaker for non-ferrous materials

以铝合金为代表的非铁金属加工用研磨断屑槽。

New line up for ground chip breaker for aluminum alloy or other non-ferrous materials.



GA断屑槽



GNDN型

退刀槽加工用GNDN型

GNDN type for neck grooving

适用于退刀槽加工的RN断屑槽。

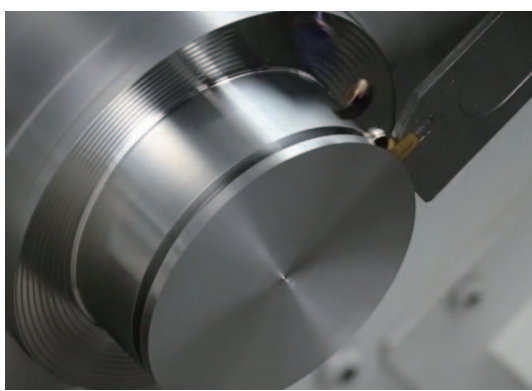
RN breaker is suitable for GNDN type.

切断刀

"Sumi-Grip" a cut-off tool

将GND型切削处理性能优异的断屑槽设计展开应用于切断刀具，改善切屑处理、加工品质。

Expanding the chip breaker design of GND series to the cut-off tool results to the improvement of chip control and machined surface quality.

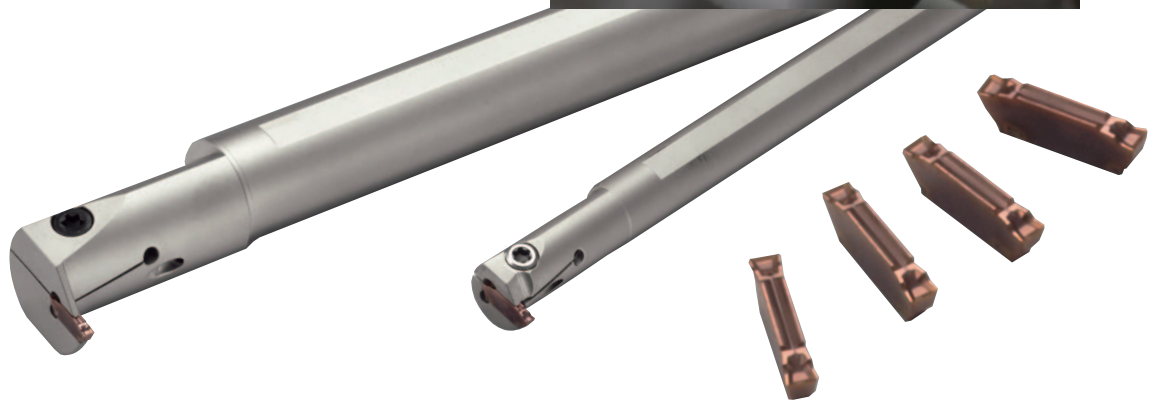


GNDIS型

GNDIS type

扩大了GND系列内径切槽的应用范围。
通过缩小了尺寸的双刀尖刀片对应最小加工径 ϕ 14~25的范围。
拓宽了GND型的加工范围。

New design of internal grooving tool, which follows the design concept of GND series, uses smaller size of GND insert with 2 edges and covers the range of minimum machining diameter between 14 to 25.

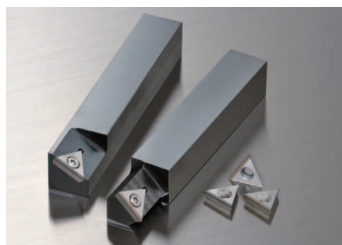


多边形刀柄

Polygon shank

多边形无键联接，实现高刚性、高精度。可对应各种特殊产品。
ISO刀片、切槽车刀GND型用刀片预定将于2017年4月实现备库。

High accuracy and rigidity tooling holder by polygon shape coupling. Different kinds of special tools can be offered. Tools connected with GND grooving and ISO standard inserts will be stocked in April 2017.

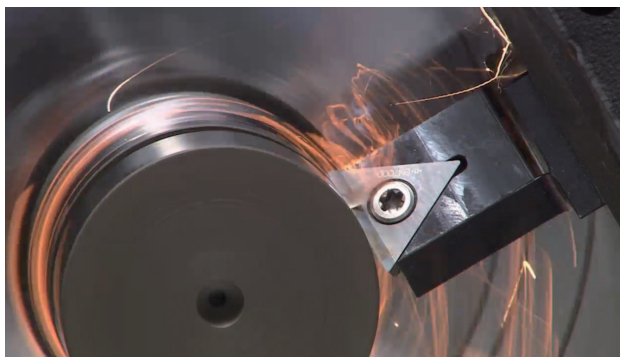


强力刮削

Hard skiving - High productivity turning of hardened steel

为淬硬钢的高效加工提供革命性的新加工方法。
与一般的点切削相比，实现4倍以上的高效率、 $Rz < 2.0 \mu m$ 以下的高质量加工。

New evolution for hard turning provides 4 or more times of productivity compared to normal point turning and $Rz < 2.0$ micron high quality of machined surface.



涂层住友CBN

BNC2010/BNC2020/BNC300

(新增了高精度·高效率加工用刀尖规格)

BNC2010/BNC2020/BNC300

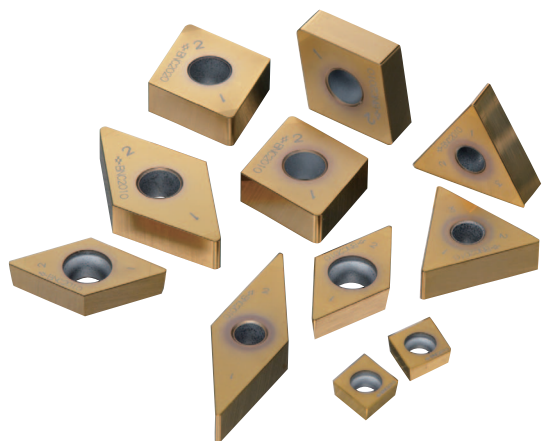
new edge geometry for high precision or productivity

淬火钢车削加工中实现更高等级的加工精度、加工效率。

“高精度刀尖”通过独有的加工技术提高刀尖品质，实现尺寸精度、加工面品质。“高效率刀尖”可在高速、高进给加工中抑制热龟裂，实现稳定的长寿命。

“The precision edge” geometry provides a great step of improvement for dimensional accuracy and machined surface quality.

“The productivity edge” geometry provides less damage of cutting edge under high speed and feed condition, and long and stable tool life.



SumiDia多功能刀具

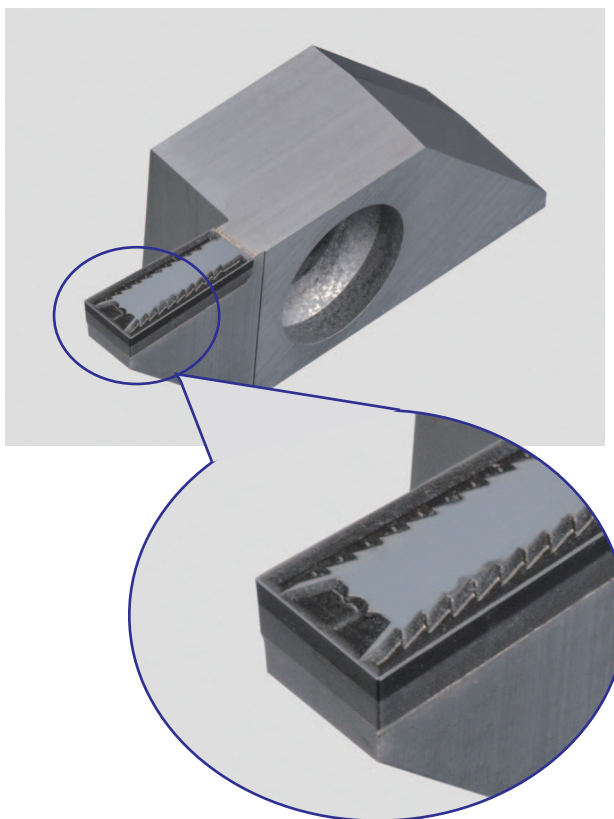
SGW型

SUMIDIA grooving tool SGW type

为切槽刀具的刀尖配备了分别对应切槽、横向进给的独有形状的3维断屑槽。

为解决以铝合金为代表的非铁金属加工中因切屑而引起的问题和改善生产效率做出了贡献。

Unique design of 3-dimensional chip breaker on the PCD cutting edge enables excellent chip control in grooving and axial turning of Aluminum alloy and non-ferrous materials, of results less trouble and higher productivity in mass production.



无断屑槽



有断屑槽(SGW型)

NEW PRODUCTS GUIDANCE

Turning tools

Milling tools

Endmills

Drills

车削刀具(CBN-PCD)

SEC-住友双刃铣刀

DFC 型

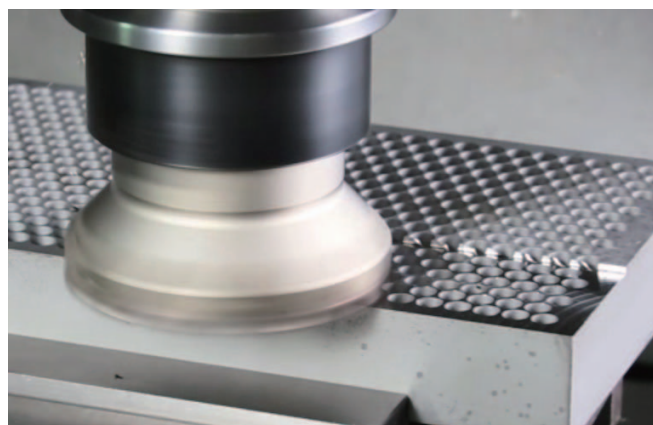
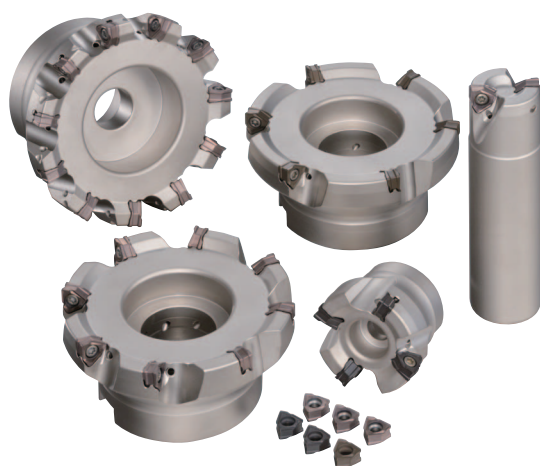
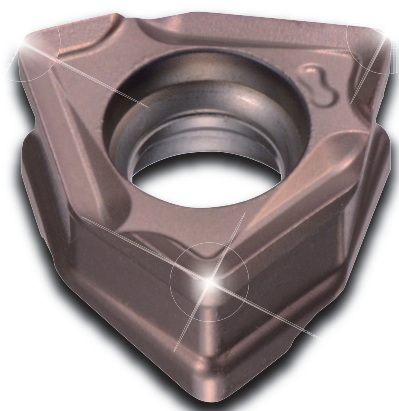
高效通用刀盘

Sumi Dual Mill DFC type

High productivity general milling cutter

双面刀片的稳定性、6刀尖的经济性，加上可与单面刀片匹敌的锋利性，广泛适用于从高效率到高品质的加工范围。

DFC type covers wide application range of high productivity to high quality with double sided insert which has stability of cutting edge, economy of 6 edges use and sharpness of cutting edge similar to that of single sided.



SEC-波刃铣刀

WEX 型

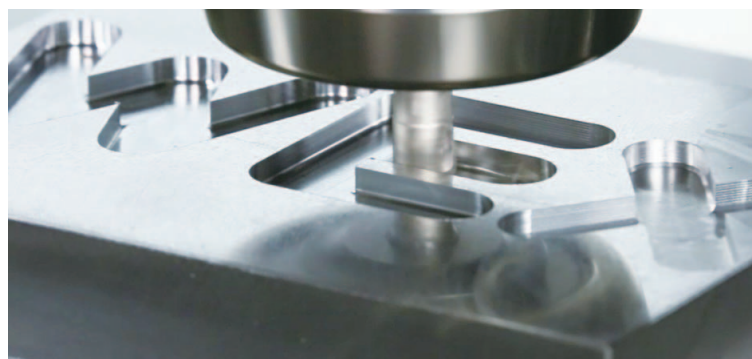
通用方肩铣刀

Wave Mill WEX series

General shoulder milling cutter

WEX新增了采用小型刀片的小直径多刃产品系列WEX1000型。扩大了机夹式立铣刀在小直径加工方面的应用范围，接近了整体立铣刀的加工领域。

WEX1000 type, which has smaller insert for smaller diameter with more teeth, enables further expansion of application field of indexable endmill to smaller diameter, 10mm. smaller diameter 10mm, towards that of solid endmill.



SEC-波刃铣刀
WFX 型

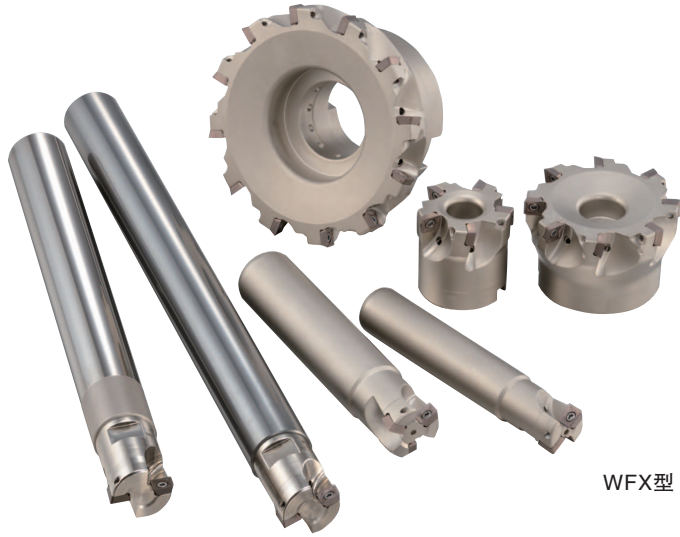
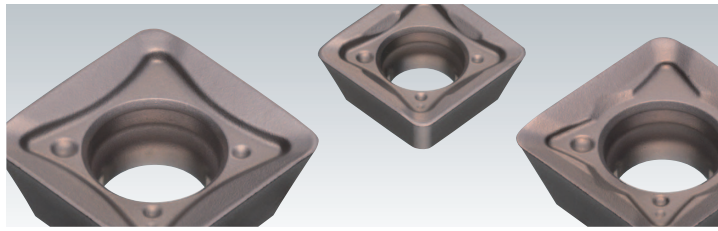
通用台肩铣刀

Wave Mill WFX series

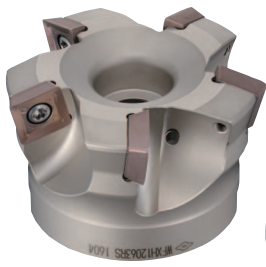
General shoulder and face milling cutter

WFX系列新增了采用相同的刀片的倒角铣刀WFXC型、适用于高进给以及镗铣加工的WFXH型。

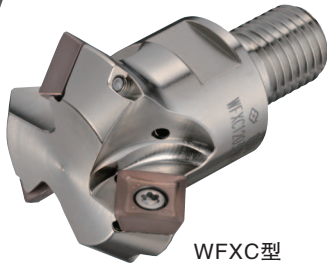
New line up of WFXC and WFXH type, which same insert as WFX type is used, are available for chamfering and high feed or plunging respectively. No more needs for different insert stock additionally for those applications.



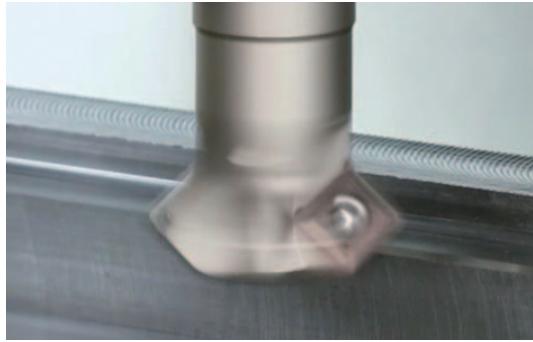
WFX型



WFXH型



WFXC型



SEC-波刃圆刀片铣刀

RSX 型

通用圆弧角铣刀

General radius cutter RSX series

在以往的 $\phi 10$ 、 12 、 16 之外、小尺寸新增 $\phi 8$ 、大尺寸新增 $\phi 20$ 的系列。并且还新增了钢、铸铁用材质(ACP、ACK系列)。

New line up of insert with $\phi 8$ and 20mm , in addition to current $\phi 10$, 12 , 16mm , and grades for steel and cast iron, ACP/ ACK series.

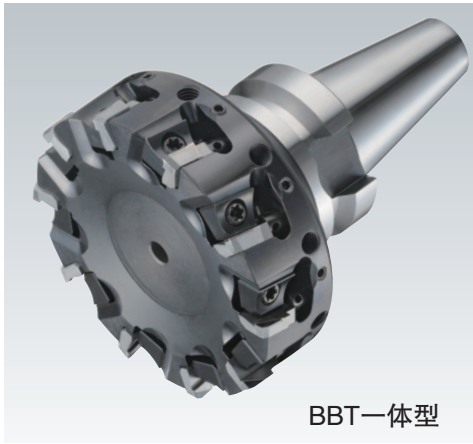


HF型

铝合金用高效刀盘
High productivity cutter for aluminum alloy

新增拓宽了多刃PCD铣刀应用范围的产品系列。

New line up of high productivity PCD cutter is expanding its application range.



BBT一体型

HFFH-BBT30型

在小型设备中通过BBT一体型确保刀具刚性。

Monoblock type shows higher rigidity in use with small machines.

智能减震器

Smart damper - adopter with anti-vibration function

具备防振机构的刀杆。在需要长悬伸量的加工中，减少刀具振动，防止加工质量以及刀具寿命下降。

Smart damper is effective for less vibration in long tool over hang, and that leads to avoid poor machined surface or tool life.

HFFH型

增加内部供油型产品HFFH型。优异的排屑性能，减少加工面和刀尖的异常损伤。

HFFH type with internal coolant hole is newly expanded, which evacuate chips completely and reduce the damage of machined surface and cutting edge.

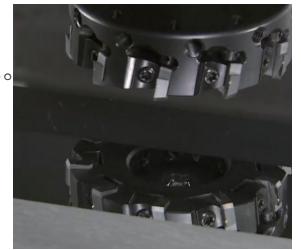


HFFH型

CVD单晶修光刃

通过CVD单晶修光刃刀片实现镜面加工。

CVD Mono-crystalline diamond wiper insert for mirror surface



SEC-GOALMILL

GRHN 型

铸铁高效加工用GOALMILL系列
Goal Mill GRHN type

铸铁高效粗加工用刀盘。通过六角形的刀片实现6mm的切深，在铸铁的粗加工中为提高加工效率和降低成本做出贡献。

Cutter for high productivity roughing of cast iron with hexagonal insert with maximum 6mm depth of cut, improves productivity and cost effectiveness.



GSX铣刀系列

GSX MILL系列

新防振立铣刀 GSV 型

New anti-vibration endmill GSV type

在通用领域发挥优异的防振性能，采用均等导程，便于再研磨。优化了性能和成本的防振立铣刀。

GSV type shows high anti-vibration performance in general field and offers easy regrinding work by constant helix angle. Cutting performance and cost effectiveness are well balanced.



GSV型

超级多用途钻头

XHGS 型

Long multi-drill XHGS type

在10/15/20/25/30xD的各尺寸下，以0.1mm单位扩充了产品系列。和小径(ϕ 0.8-2.0)组合，更广泛的支持深孔加工。

Item expansion for 10/15/20/25/30xD with 0.1mm steps in diameter ϕ 2.5 to more than 10 mm, covers wider range of deep hole drilling together with MLDH type (diameter ϕ 0.8 to 2.0mm).



NEW PRODUCTS GUIDANCE
Turning tools

Milling tools

Endmills

Drills

铣削 / 钻孔刀具

多用途平底钻

MDF 型

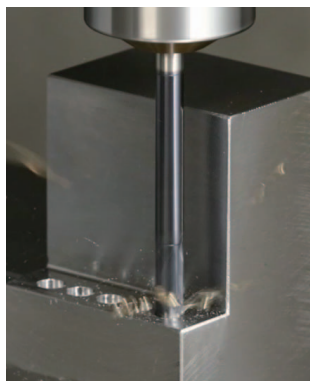
Flat multi-drill MDF series

在标准型(-S2D)之外, 扩充深孔加工的长刀柄型(-L2D)、内部供油型(-H3D/H5D)以及机夹式的SMDT-MFS型。

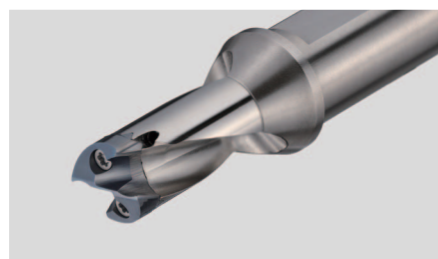
In addition to standard type (-S2D), long-shank type (-L2D) for drilling in deep position, internal cooling type (-H3D/ -H5D) and head replaceable type (SMDT-MFS) are available.



内部供油型



长刀柄型



机夹式



SEC-多用途钻头

SMD-12D 型

Head replaceable drill SMD-12D type

降低深孔钻的成本。
通过优化沟槽形状以提高排屑性能, 在刀柄部追加法兰以追求加工的稳定性。

For cost reduction of deep hole drilling in bigger diameter
Optimized flute design enables enough chip evacuation in deep hole drilling and additional flange effects to stable drilling.

SEC-多用途钻头

SMD 型

Head replaceable drill SMD series

以0.1mm单位扩充了 $\phi 12 \sim 30$ 的MTL/MEL型刃头的产品系列。

Item expansion for MTL/ MEL type heads in diameter
 $\phi 12-30$ with 0.1mm step.



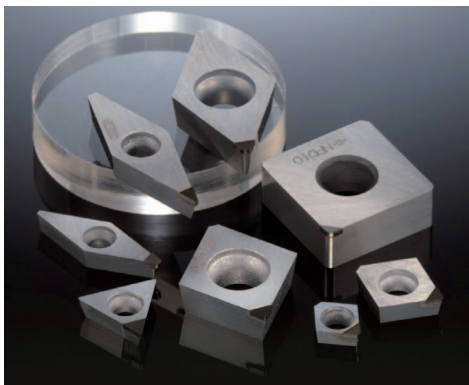
住友无粘结剂金刚石

NPD10

Grade with SUMIDIA Binderless for hard or brittle materials

在硬质合金凸模等的加工中，凭借良好的耐磨损性，长时间保持尺寸精度。

Due to excellent wear resistance, it can keep longer good dimensional accuracy even in carbide turning.



NEW PRODUCTS GUIDANCE

Turning tools

Milling tools

Endmills

Drills

铣削 / 钻孔刀具



模具精加工铣刀

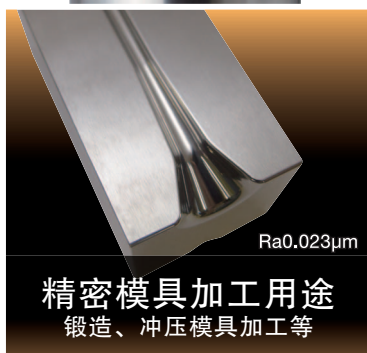
住友金刚石立铣刀(无粘结剂)

NPDB 型/ NPDRS 型

Endmills for finishing with SUMIDIA Binderless, NPDB type/ NPDRS type

采用终极金刚石材料的硬质合金直雕加工刀具新增了球头立铣刀。

Radius endmill is added in the line up of ultimate diamond "SUMIDIA Binderless" endmills for carbide mold direct machining.



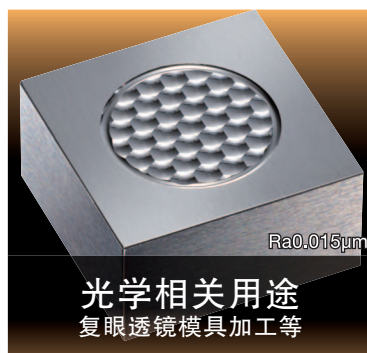
Ra0.023μm

精密模具加工用途
锻造、冲压模具加工等



Ra0.016μm

医疗相关用途
μ-TAS模具加工等



Ra0.015μm

光学相关用途
复眼透镜模具加工等

模具精加工铣刀

住友金刚石涂层球头立铣刀

SDCB 型

SUMIDIA coat ball-nose endmills
SDCB series

硬质合金直雕的粗加工用刀具扩大了尺寸种类。

Item expansion of SUMIDIA coat endmills for carbide mold direct machining.



◆安全使用注意事项◆



●加工时会出现高温切屑飞散、排出切屑过长等情况，请使用安全罩壳及防护眼镜等防护具，并务必注意防火、防灾。

● Very hot or lengthy chips may be discharged while the machine is in operation. Therefore, machine guards, safety goggles or other protective covers must be used. Fire safety precautions must also be considered.

●使用时请务必小心锋利刀尖。

●使用方法错误、使用条件不当时，会造成刀具崩损、飞散，请在推荐的范围内使用。

● Please handle with care as this product has sharp edges. ● Improper cutting conditions or mis-handling of the tool may result in breakages or projectiles. Therefore, please use the tool within its recommended conditions.

●使用非水溶性切削油的场合，为防止火灾意外，请配置自动灭火装置。

● When using non-water soluble cutting oil, precautions against fire must be taken and please ensure that a fire extinguisher is placed near the machine.

住友电工硬质合金株式会社

住友电工硬质合金贸易(上海)有限公司

地址：上海市延安西路728号华敏·翰尊国际大厦6楼J座(邮编：200050)
电话：021-5238-1199 传真：021-6212-9689

住友电工硬质合金贸易(上海)有限公司广州分公司

地址：广州市天河区林和西路3-15号耀中广场A座2221室(邮编：510610)
电话：020-3891-0442 传真：020-3891-0449

住友电工硬质合金贸易(上海)有限公司北京分公司

地址：北京市朝阳区东三环北路3号幸福大厦B座1306室(邮编：100027)
电话：010-6468-8500 传真：010-6468-9500

住友电工硬质合金贸易(上海)有限公司大连分公司

地址：大连市开发区金马路128号天成国际金融中心807D(邮编：116600)
电话：0411-8792-6266 传真：0411-8792-6277

住友电工硬质合金贸易(上海)有限公司重庆分公司

地址：重庆市江北区建新北路一支路6号未来国际大厦9-1(邮编：400020)
电话：023-6785-7656 传真：023-6785-7780

住友电工硬质合金贸易(上海)有限公司成都分公司

地址：成都市锦江区东大街紫东楼段11号东方广场A座2003号(邮编：610016)
电话：028-8445-6626 传真：028-8443-6625

住友电工硬质合金贸易(上海)有限公司长春分公司

地址：长春市南关区人民大街207号(卫星广场)财富领域5A18A室(邮编：130000)
电话：0431-8191-6558 传真：0431-8191-6559

住友电工硬质合金贸易(上海)有限公司宁波分公司

地址：宁波市江北区大庆南路99号来福士广场办公楼709室(邮编：315020)
电话：0574-8723-3856 传真：0574-8723-3935

住友电工硬质合金贸易(上海)有限公司青岛分公司

地址：青岛市四方区山东路190号银华广场2栋212室(邮编：266033)
电话：0532-5578-7866 传真：0532-5578-7865

住友电工硬质合金贸易(上海)有限公司武汉分公司

地址：武汉市武昌区水果湖楚河汉街·汉街总部国际C座1808室(邮编：430077)
电话：027-8711-0060 传真：027-8711-0090

住友电工硬质合金贸易(上海)有限公司厦门分公司

地址：厦门市火炬高新区火炬园新丰三路16号401-B5(邮编：362000)
电话：0592-5602-190 传真：0592-5602-195

住友电工硬质合金贸易(上海)有限公司南京分公司

地址：南京市秦淮区汉中路1号国际金融中心12楼D座(邮编：210029)
电话：025-8586-0803 传真：025-8586-0881

住友电工硬质合金贸易(上海)有限公司天津分公司

地址：天津市空港经济区西四道168号融和广场5号楼2J1905室(邮编：300300)
电话：022-8494-9495 传真：022-8494-9493

住友电工硬质合金(常州)有限公司

地址：常州市武进区技术产业开发区西园路8号12号厂房(邮编：213164)
电话：0519-8622-0306 传真：0519-8622-0305

中国刀具技术中心

地址：常州市武进高新技术产业开发区西园路8号12号厂房(邮编：213164)
电话：0519-8622-0306(分机：224)

<http://www.sumitool.com>(日文)

<http://www.sumitool.com/en>(英文)

<http://www.sumitool.com/cn>(中文)



微信扫一扫