



CARBIDE - CBN - DIAMOND

COMPANY PROFILE

公司简介

迅速应对全球市场的动向， 作顾客满意的切削刀具制造商。

We aim to be the cutting tool manufacturer that satisfies all our customers, through speedy response to global market changes.

本公司于2003年4月从住友电气工业(粉末合金、金刚石事业部)独立出来，作为切削刀具的专业制造商，踏上了全新的征途。

全世界切削刀具用户的环境和需求都在时刻变化之中，

我们的目标就是成为能够迅速应对这一变化趋势、满足客户需求的企业。

为此，本公司在过往积累的材料技术和技术开发实力的基础上，

积极加强与日本国内外制造、销售网络的合作，努力进一步发展，壮大自身的事业。

今后，我们将继续通过提供深受全世界客户喜爱的最优秀产品、技术和服务，

为社会发展作出自己的贡献。

Sumitomo Electric Hardmetal Corp. was formed to be a globally integrated and specialized cutting tool manufacturer, thereby spinning off from Sumitomo Electric Industries, Ltd. on April 1, 2003.

We aim to be a company that is able to satisfy all cutting tool customers,

by globalizing and being able to respond rapidly to changes in our customers business environment and needs.

In addition to material engineering technologies and product development capabilities,

which we had acquired in the past, we now also strive to expand and develop our business

in collaboration with domestic and international sales office networks and production plants.

概要

公司名称 ■ 住友电工硬质合金株式会社

Sumitomo Electric Hardmetal Corp.

成立日期 ■ 2003年4月1日

总部地址 ■ 兵库县伊丹市昆阳北1-1-1

(住友电气工业株式会社 伊丹制作所内)

制造网点 ■ 日本国内：伊丹、北海道、九州(佐贺)、东海(三重)

海外：美国、德国、泰国、印度尼西亚、中国等

法人代表 ■ 白石 顺一

事业内容 ■ 硬质合金、CBN烧结体以及金刚石烧结体制切削刀具

(商标: Igetalloy、住友CBN等)、耐磨损刀具及其材料、激光用光学零部件、合成金刚石制电子相关零部件等的开发、制造

资本金 ■ 50亿日元〔住友电气工业株式会社 全额出资〕

合并销售额 ■ 710亿日元(2013年3月期)

员工数 ■ 540名

交易银行 ■ 三井住友银行 大阪总店营业部

Summary

Company name : Sumitomo Electric Hardmetal Corp.

Established : April 1, 2003

Head office : 1-1-1, Koya-kita, Itami, Hyogo, Japan

Production Network : Domestic Itami, Hokkaido, Kyushu(Saga), Tokai(Mie)

Overseas U.S.A., Germany, Thailand, Indonesia, China, etc.

President : Junichi Shiraishi

Business activities : Development, production and sales of cemented carbide, CBN and sintered diamond cutting tools (brand name : IGETALLOY, SUMIBORON, etc.), wear-resistant tools and materials, optical parts for laser beam machines, diamond electronic parts, etc.

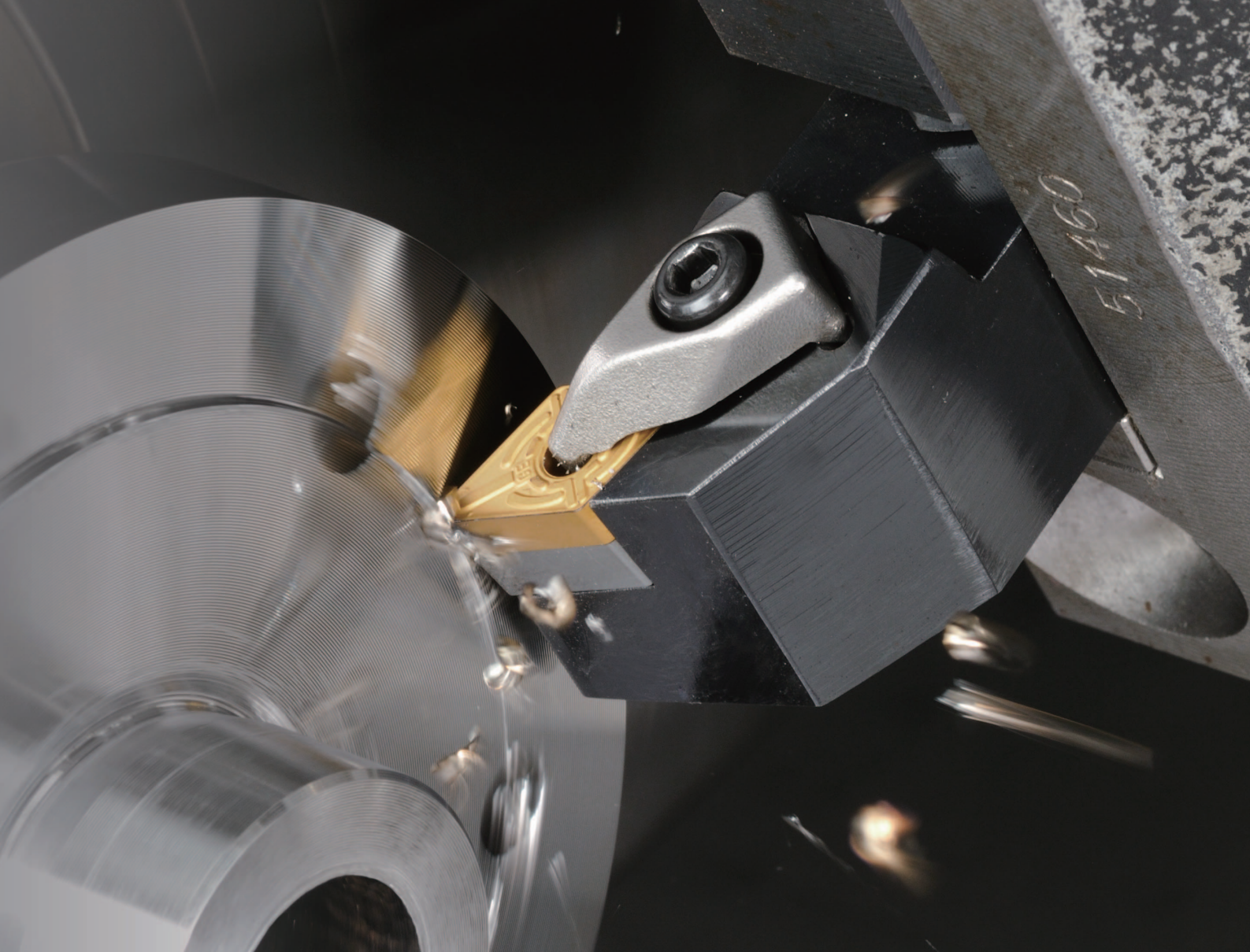
Capital : 5 billion yen

(100% owned by Sumitomo Electric Industries, Ltd.)

Consolidated Sales : 71 billion yen (2013/3)

Employees : 540

Main Bank : Sumitomo Mitsui Banking Corporation



企业理念

重信用，通过创造新价值为社会的发展作出贡献。

- 提供深受客户喜爱的最优秀产品、技术和服务
- 通过开发革命性的尖端技术，实现可持续增长
- 严格守信，灵活机动的企业体质改善
- 员工收获成长、为之自豪、生机勃勃的企业氛围

Company Philosophy

Achieve a high recognition by customers, as a company that can be trusted and offers value to society.

Create new values to contribute to the growth of society.

Management Policy

- Supply the best products, services and technologies possible, to meet customer satisfaction.
- Achieve continuous corporate growth by developing innovative and new technologies.
- Sustain a position of highest reliability with our customers and aggressively improve our business activity to gain marketshare, while remaining flexible to customer and industry needs.
- Create a vigorous corporate culture, wherein all employees grow with the company.

沿革

- 1931年 ■ 开始制造销售超硬合金工具 “IGETALLOY”
- 1977年 ■ 开始制造销售CBN烧结体刀具 “SumiBoron”
- 1978年 ■ 开始制造销售金刚石烧结体刀具 “SumiDia”
- 1994年 ■ 开始制造销售激光加工用光学零部件
- 1999年 ■ 与株式会社不二越开展业务合作
- 2003年 ■ 作为住友电气工业株式会社的独立分公司，设立住友电工硬质合金株式会社
- 2009年 ■ 以住友电气工业株式会社为继承企业，剥离日本国内外营业等相关事业

Company history

- 1931 ■ Started to manufacture and sell carbide cutting tools under the brand name of "IGETALLOY".
- 1977 ■ Started to manufacture and sell sintered CBN cutting tools under the brand name of "SUMIBORON".
- 1978 ■ Started to manufacture and sell sintered Diamond tools under the brand name of "SUMIDIA".
- 1994 ■ Started to manufacture and sell optical lenses for laser applications.
- 1999 ■ Entered into a business alliance with Nachi-Fujikoshi Corp.
- 2003 ■ Established Sumitomo Electric Hardmetal Corp.(SHM), becoming independent from Sumitomo Electric Industries, Ltd..
- 2009 ■ Worldwide marketing and sales function of SHM will be transferred to Sumitomo Electric Industries, Ltd..

Market

将以尖端的粉末冶金技术为基础、运用先进技术和尖端设备、在严格的品质管理下所生产的产品，以汽车产业为代表的机械产业、电子产业、航空航天产业等广泛领域，为社会的发展和未来作出贡献。

Based on highly sophisticated powder metallurgical technology, we manufacture products utilizing state of the art technologies and our strictly controlled quality assurance systems. Our products are used for machining operations in industries such as automotive, machine tools, electronics and aerospace and contribute to the growth of our society and its future.

激光用 光学零部件

Laser Optics

作为激光加工设备核心部件的反光镜、透镜等光学零部件种类齐全。

Manufacturer of laser optics, such as the optical lenses, mirrors etc..

硬质合金材料

Carbide Rod and Blanks

备有多种材质硬质合金圆棒材和板材等各种刀具和模具等用的材料。

Manufacturer of a broad range of grades of carbide rod and blanks, utilized for industrial cutting tool and die/mold applications.

金刚石 CBN产品

Diamond and CBN Products

推出了工具用途的合成单晶金刚石和金刚石烧结体材料、应用气相合成金刚石的电子产品等商品。

Manufacturer of synthetic, single crystal diamond products for electronic devices and sintered PCD materials for industrial cutting tools utilized in metals manufacturing industries.

耐磨损刀具· 其他

Wear-resistant Tools

提供塑性加工刀具、锻造模具等耐磨损刀具和都市开发刀具等。

Manufacturer of wear resistant materials, used for forging dies, mining compacts and other tools used in construction industries.



Igetalloy

(硬质合金刀具)
IGETALLOY
(Cemented Carbide Tools)

“Igetalloy”品牌的硬质合金刀具在各种机械加工现场赢得了用户深厚的信赖。

Manufacturer of carbide cutting tools sold under the brand name of "IGETALLOY".

住友CBN

(CBN烧结体刀具)
SUMIBORON
(Sintered CBN Cutting Tools)

“住友CBN”品牌的CBN烧结体刀具能够实现淬火钢的切削加工，同时还非常环保。

Manufacturer of sintered CBN cutting tools, which are used to machine hardened steels and high speed machining of cast irons. Marketed under the brand name of "SUMIBORON".

SumiDia

(金刚石烧结体刀具)
SUMIDIA
(Polycrystalline Sintered Diamond Tools)

“SumiDia”品牌的金刚石烧结体刀具已经成为近年来愈发增多的非铁金属的加工不可或缺的刀具。

Manufacturer of polycrystalline sintered diamond tools used for machining non-ferrous metals, such as aluminum. Marketed under the brand name of "SUMIDIA".

工具工程服务 ■ TOOL ENGINEERING SERVICE

1 培训 Knowledge

根据不同的培训目的和培训对象，备有以下6种培训课程。

*关于详细的培训课程，请向附近的本公司营业所咨询。

We offer the following 6 courses to suit our customers' requirements and proficiency.

*Please contact one of our offices near to you for detailed curriculum of the above courses.

2 性能评价技术 Performance evaluation technology

要实现生产现场的加工改善，不能仅仅依赖于经验和感觉等感性手段，而是应使用最新的测量仪器来实现加工现象的可视化，以明确问题点。

An important point for conducting process improvement activities on-site is not only rely on personal experiences or intuition but also to clarify problems through visualization of the machining phenomena with the help of the latest measuring equipment.

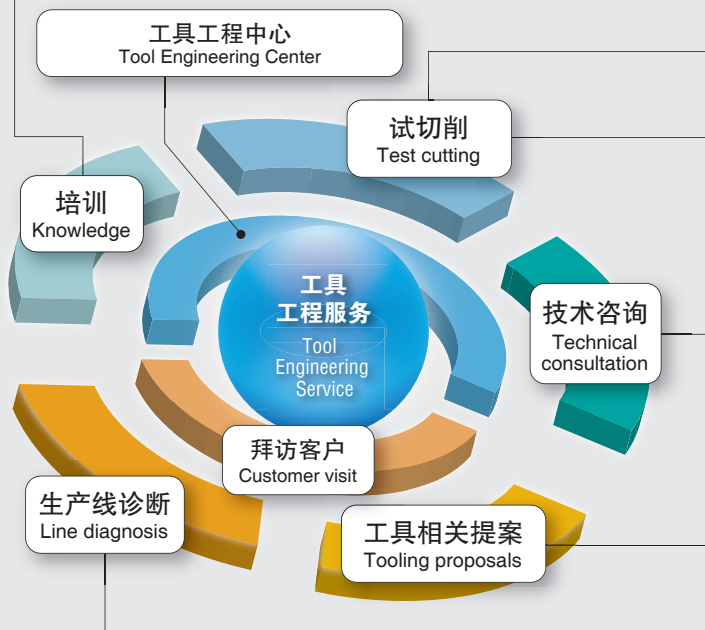
3 试切削和技术咨询 Test cutting and technical consultation

在工具工程中心，可以对客户的工件进行试切削，从而提出更切合实际的技术提案。此外，还提供针对各种加工问题的解决方案和加工生产线整体的生产线诊断、新生产线的工具支持。

*详情请向附近的本公司营业所咨询。

In depth technical proposals can be provided through test cutting actual customer components in our Tool Engineering Center. In addition, solutions for the various types of machining troubles, process improvement of whole machining lines and tool-up support for new machining line are also offered.

*Please contact one our offices near to you for more information.



Products | 切削刀具 ■ Cutting tools

Igetalloy

硬质合金“Igetalloy”是硬度仅次于金刚石而又如钢般强韧的合金，拥有近80年之久的应用实绩和对各种用途的丰富材质系列，优异的性能使其广受青睐。

IGETALLOY (Cemented Carbide Tools)

Sumitomo Electric Hardmetal has been developing carbide grades for the past 80 years. Since then, many new grades have been developed, current grades constantly improved and others obsoleted - meeting ever changing industrial needs.



品种丰富，可应对机械加工的各种需求

A complete variety of standard and special tools, needed for a customer's machining needs.

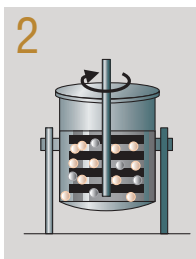


原料粉

使用碳化钨(WC)、钴(Co)等经过严格筛选的原料粉末。

Source powder

We use carefully selected source powders, such as tungsten carbide (WC) or Cobalt (Co) etc.

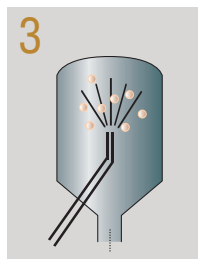


混合

使用混合机将2种以上的粉末在液体中均匀混合。

Mixing powder

By using a mixing machine, two or more kinds of powder are uniformly mixed.

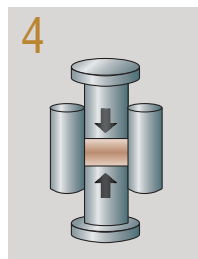


造粒

将混合液从干燥机的喷嘴喷出至高温的气体环境中，使之干燥，得到颗粒状的成品粉末。

Drying and Granulation by Spray-Dryer

Ready-to-press powder will be obtained when the mixture is sprayed into a hot gas atmosphere spray-dry chamber, through a nozzle (Jet dryness).

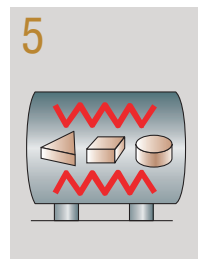


冲压

将成品粉末填充到冲压机的模具中，通过加压压缩，制成设定的形状。

Pressing

Ready-to-press powder is filled into a die on a press machine, and the product is pressed to shape at specific pressures.



烧结

对模压体进行一定时间的高温加热，从而得到硬质合金(烧结体)。

Sintering

Sintered carbide is obtained from a pressed green compact, which is heated under specific temperatures and time in vacuum furnaces.



完成

经过使用金刚石砂轮的研磨加工等精加工和检查工序后完成。

Completion

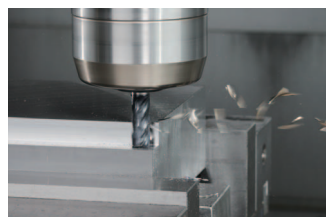
It is completed through finishing by various processes (such as grinding by diamond wheel etc.).



车削加工刀具
Turning tools



铣削加工刀具
Milling tools



立铣刀
Endmills



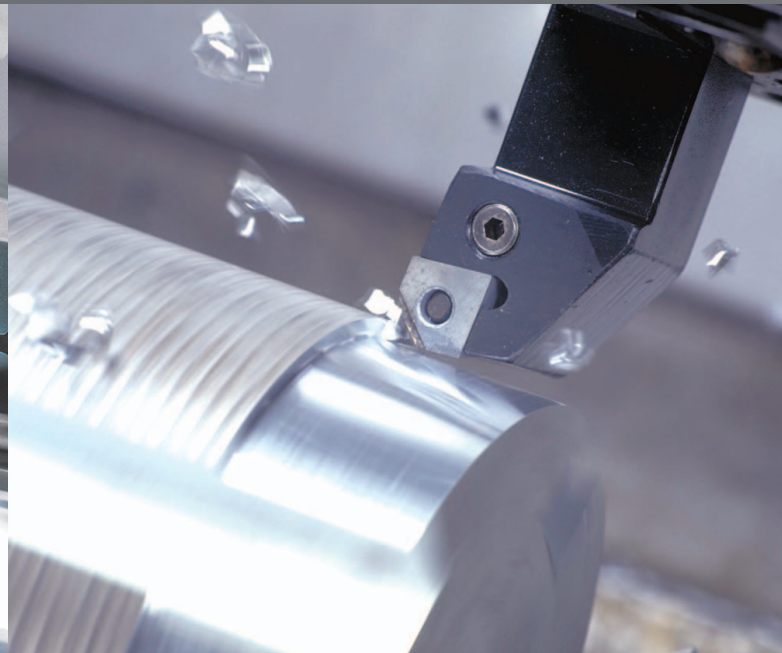
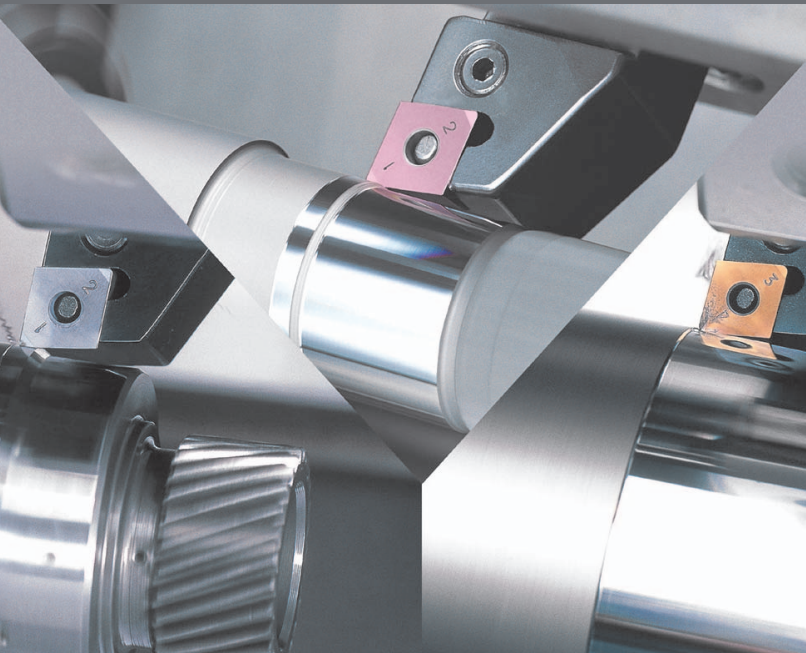
钻孔加工刀具
Drills

住友CBN · SumiDia

“住友CBN”是在主成分CBN(立方氮化硼)中添加特殊陶瓷粘结剂，在超高压高温下烧结而成的材料。“SumiDia”则是超细的金刚石颗粒高密度地烧结而成的金刚石烧结体。与以往的刀具材料相比，两者皆具有更高的硬度和强度以及优异的耐热性。

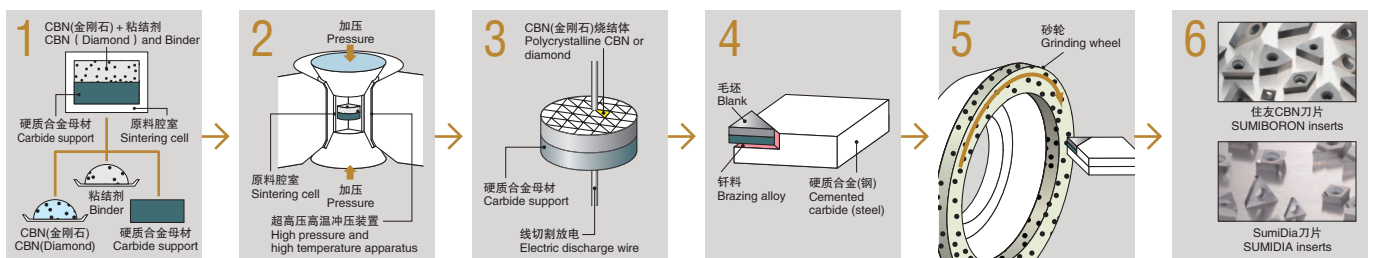
SUMIBORON (CBN) / SUMIDIA (PCD)

SUMIBORON is a material sintered under ultra-high pressure and temperature. It mainly contains CBN (Cubic Boron Nitride), with a special bonding ceramic agent. SUMIDIA is a sintered, fine grain diamond material, with high density. Both grades have higher hardness and higher heat resistance than conventional tool materials.



使用住友CBN刀片进行淬火钢切削
Hardened steel cutting by SUMIBORON inserts

使用SumiDia刀片进行铝断续切削
Interrupted Aluminum cutting by SUMIDIA inserts



原料填充

在作为原料的CBN或金刚石粉末中加入特殊的粘结剂，与硬质合金母材一起填充到腔室中。

Charging

Sintering cell is filled with a mixture of CBN or diamond powder and special binder on the carbide support.

超高压高温烧结

使用超高压高温装置，在5GPa以上、1,400~1,500°C的条件下将CBN(金刚石)粉末与粘结剂一起进行烧结。

High pressure and high temperature sintering

CBN or diamond powder with binder are sintered within a high pressure and high temperature furnace (Condition: 5GPa, 1,400~1,500°C).

毛坯切断加工

通过线切割放电加工将烧结体材料根据用途切割成所需的形状。

Cutting blank

Polycrystalline CBN or diamond are cut to various shapes according to their use by wire electric discharge machining.

钎焊

将切断的烧结体材料钎焊到硬质合金或钢等材料上。

Brazing

Cut blanks are brazed on the tools made of cemented carbide or steel.

精加工

对钎焊好的烧结体材料进行磨削精加工。

Finishing

Cutting tools are completed by grinding.

完成

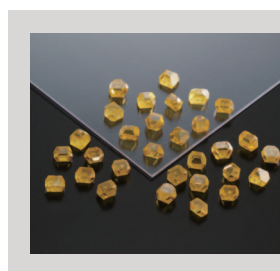
经过检查工序后完成。

Completion

Completed after final inspection.



使用住友CBN刀片进行铸铁切削
Cast iron cutting by SUMIBORON inserts



单晶金刚石/金刚石 电子产品

SUMICRYSTAL /CVD Diamond Products

合成单晶金刚石

“Sumi晶体”

Synthetic single Crystal Diamond
“SUMICRYSTAL”

激光用光学零部件

激光加工机可以将扩散的光合而为一，转化成为强大的能量。

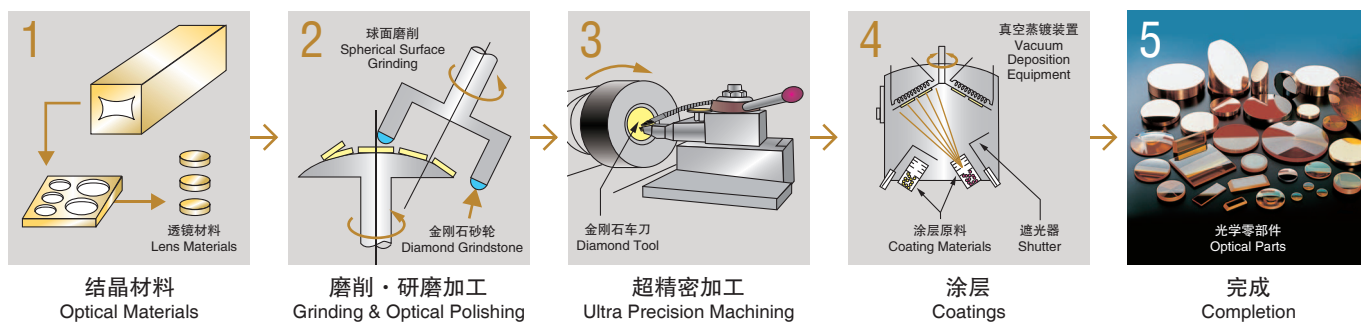
激光用光学零部件则是激光加工机中最重要的零部件，称其为激光加工机的“心脏”亦不为过。从传输系统到聚光系统，本公司广泛提供与激光有关的光学零部件。

Optical parts for laser beam machines

The laser beam machine brings the light to diffuse together in one, and is changed to mighty energy. Optical parts are the most important parts in the laser beam machine, and have played the role used as a core. We supply the wide range series of the optical parts from transmission field to focusing field.



各种透镜·反光镜类、F0透镜、材料等
Optical Lenses & Mirrors, F0Lens, Materials etc.



硬质合金材料 Carbide Blanks



各种硬质合金
圆棒材·板材材料
Round & Rectangular
Carbide Blanks

耐磨损刀具·其他 Wear Resistant Tools & Others



各种锻造模具、
粉末成型模具等
Dies & Punches for
Forging and Powder
Metallurgy

本公司与住友电工研究部门一起，始终专注于领先市场动向的新需求开拓、革命性的尖端新技术和新材料的开发。

In cooperation with Sumitomo Electric Industries, our company is engaged in research and development of new, innovative and advanced metal cutting tool materials, to meet changing industry needs, on an ongoing basis.



超高压合成技术

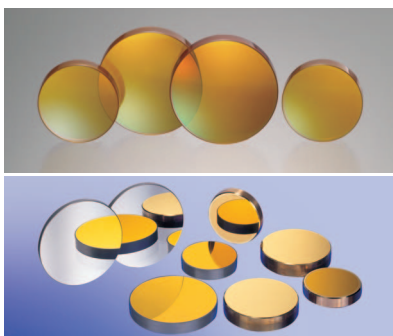
Ultrahigh Pressure Technology



合成单晶金刚石
Synthetic Single Crystal Diamond

光学结晶制造技术

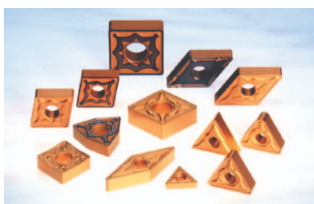
Crystalline Materials Growth



光学透镜 · 反光镜
Optical Lenses & Mirrors

涂层技术

Coating Technology



CVD涂层
CVD Coating



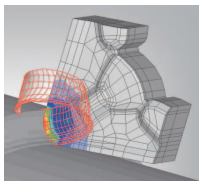
PVD涂层
PVD Coating



DLC涂层
DLC Coating

CAE解析技术

CAE Analysis



切屑模拟
Simulation of Chip Flow

超精密非球面加工技术

Ultra Precision Manufacturing



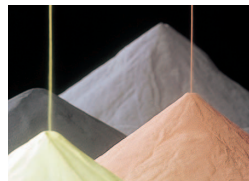
非球面加工
Aspheric Generating



F0透镜
F0 Lens

硬质合金材料制造技术

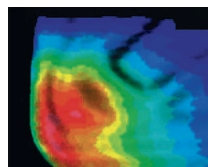
Carbide Materials Manufacturing



原料粉末
Ready to Press Powder

评价技术

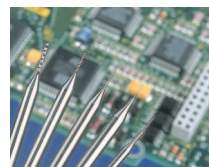
Evaluation Technology



切削温度分布测量
Measurement of Cutting Temperature Distribution

精密加工技术

Precision Grinding



印刷电路板用钻头
PCB Drill Bits

China | 中国

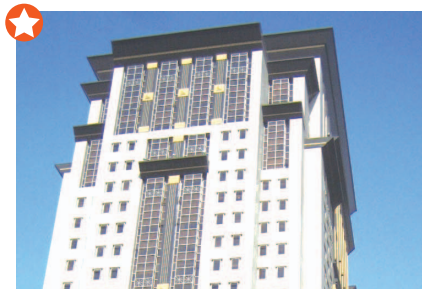
中国市场已发展为世界最大规模，客户们对品质及服务的要求也逐年提高。我们将本着住友集团【万事求精】、【重视信用】、【不求浮利】的基本理念，在致力于成为令客户信赖、满意的公司同时，愿意为中国的机加工产业发展助上一臂之力。

China has been already largest market in the world. The requirement for well quality and service were increase year by year. We will commit ourselves to become the reliable and satisfactory company to all the customers with the Sumitomo spirit "all refinement, pay attention to integrity, not for exaggerated profits" and hope to give great contribution to the development of Chinese industry.

- 销售网点
Sales Network
- 制造网点
Production Network
- 工具工程中心
Tool Engineering Center



销售网点 ■ Sales Network



住友电工硬质合金贸易(上海)有限公司

中国综合销售公司
■ 中国/上海[2005年成立]

Sumitomo Electric Hardmetal Trading(Shanghai)Co.,Ltd.

Sales Headquarters in China
■ Shanghai, China [Established in 2005]

住友电工硬质合金贸易(上海)有限公司于2004年10月由住友电工100%出资设立，从事在中国地区的硬质合金刀具及CBN、PCD烧结体刀具的销售。我们所销售的产品有从日本总公司进口的标准刀具，也有由住友电工100%出资设立的常州工厂的产品。我们将这些高信赖性的刀具产品以更快、更低成本的方式提供给中国所有的产业。

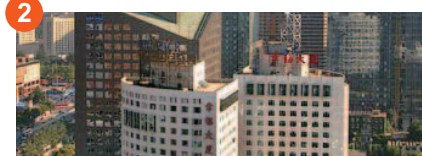
Sumitomo Electric Hardmetal Trading (Shanghai) Co., Ltd. was 100% invested by Sumitomo Electric and established in October, 2004. Our company is mainly engaged in carbide cutter, CBN, PCD sintered cutter sales in China. We sell not only the productions from Sumitomo Japan but also from Changzhou which was also 100% invested by Sumitomo Electric. We will provide the high reliable products to all Chinese industry with the faster delivery and lower cost.



1

住友电工硬质合金贸易(上海)有限公司 广州分公司[2005年成立]

Sumitomo Electric Hardmetal Trading(Shanghai)Co.,Ltd.
Guangzhou Branch [Established in 2005]



2

住友电工硬质合金贸易(上海)有限公司 北京分公司[2006年成立]

Sumitomo Electric Hardmetal Trading(Shanghai)Co.,Ltd.
Beijing Branch [Established in 2005]



3

住友电工硬质合金贸易(上海)有限公司 大连分公司[2009年成立]

Sumitomo Electric Hardmetal Trading(Shanghai)Co.,Ltd.
Dalian Branch [Established in 2009]



4

住友电工硬质合金贸易(上海)有限公司 重庆分公司[2010年成立]

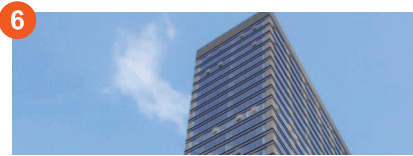
Sumitomo Electric Hardmetal Trading(Shanghai)Co.,Ltd.
Chongqing Branch [Established in 2010]



5

住友电工硬质合金贸易(上海)有限公司 长春事务所[2011年成立]

Sumitomo Electric Hardmetal Trading(Shanghai)Co.,Ltd.
Changchun Office [Established in 2011]



6

住友电工硬质合金贸易(上海)有限公司 成都分公司[2012年成立]

Sumitomo Electric Hardmetal Trading(Shanghai)Co.,Ltd.
Chengdu Branch [Established in 2012]



7

住友电工硬质合金贸易(上海)有限公司 宁波分公司[2013年成立]

Sumitomo Electric Hardmetal Trading(Shanghai)Co.,Ltd.
Ningbo Branch [Established in 2013]



8

住友电工硬质合金贸易(上海)有限公司 青岛分公司[2013年成立]

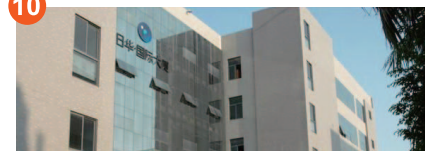
Sumitomo Electric Hardmetal Trading(Shanghai)Co.,Ltd.
Qingdao Branch [Established in 2013]



9

住友电工硬质合金贸易(上海)有限公司 武汉分公司[2014年成立]

Sumitomo Electric Hardmetal Trading(Shanghai)Co.,Ltd.
Wuhan Branch [Established in 2014]



10

住友电工硬质合金贸易(上海)有限公司 厦门分公司[2014年成立]

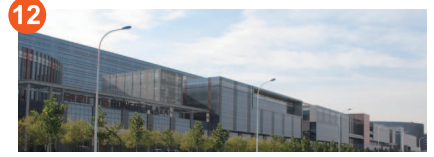
Sumitomo Electric Hardmetal Trading(Shanghai)Co.,Ltd.
Amoy Office [Established in 2014]



11

住友电工硬质合金贸易(上海)有限公司 南京分公司[2015年成立]

Sumitomo Electric Hardmetal Trading(Shanghai)Co.,Ltd.
Nanjing Branch [Established in 2015]



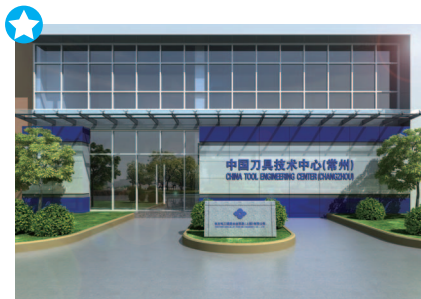
12

住友电工硬质合金贸易(上海)有限公司 天津分公司[2015年成立]

Sumitomo Electric Hardmetal Trading(Shanghai)Co.,Ltd.
Tianjin Branch [Established in 2015]



工具工程中心 ■ Tool Engineering Center



C-TEC中国刀具技术中心 (常州)

■ 中国/常州[2011年成立]

China Tool Engineering Center (CHANGZHOU)
Factory Building 12, Xihu Road 8, Wujin High-Tech Industrial Zone, Changzhou, 213164, China

■ Changzhou, China [Established in 2011]

C-TEC中国刀具技术中心定期举办刀具技术培训，承担客户提出的刀具性能测试，PMG部门进行刀具整体方案的制作及解决，设计非标刀具及询价。

This Tool Engineering Center holds seminars and performs technological test requested by users. Project Management Group, supports tooling and makes the estimates, and Trading center are also on same property.



住友电工硬质合金贸易 (上海)在库中心

■ 中国/上海[2011年成立]

Shanghai Inventory Center
Tower 2-3, 158, Xu xiang Road Qingpu District, Shanghai 201702, China

■ Shanghai, China [Established in 2011]

1 研修 Knowledge

根据研修的目的和对象，设置有任何人均可轻松参加的六种研修课程。
* 详细研修课程请咨询就近营业所

We offer the following 6 courses to suit our customers' requirements and proficiency.
*Please contact one of our offices near to you for detailed curriculum of the above courses.

2 性能评价技术 Performance evaluation technology

为了实现现场加工作业的改善，不仅是依靠经验和直觉这样的感性判断，而是使用最先进的测量仪器，可视化加工现象，明确加工中的问题点。

An important point for conducting process improvement activities on-site is not only rely on personal experiences or intuition but also to clarify problems through visualization of the machining phenomena with the help of the latest measuring equipment.

3 试切和技术咨询 Test cutting and technical consultation

通过在刀具技术中心试切客户工件，与客户一道，共同拟定更为妥当的技术方案。而且，可对应针对加工中各种问题的解决方案和对整线的线上诊断，以及新线的配刀方案支持。
* 详情请咨询就近的营业所

In depth technical proposals can be provided through test cutting actual customer components in our Tool Engineering Center. In addition, solutions for the various types of machining troubles, process improvement of whole machining lines and tool-up support for new machining line are also offered.
*Please contact one of our offices near to you for more information.



制造网点 ■ Production Network



住友电工硬质合金 (常州)有限公司

■ 中国/常州[2011年成立]

■ 产品：硬质合金刀片、CBN刀具、PCD刀具、切槽刀具、硬质合金钻头

Sumiomo Electric Hardmetal Manufacturing (Changzhou) Co.,Ltd.
Factory Building 12, Xihu Road 8, Wujin High-Tech Industrial Zone, Changzhou, 213164, China

■ Changzhou, China [Established in 2011]

■ Manufacturing Items: Carbide Inserts, CBN Tools, PCD Tolls, Grooving Tools, Solid Carbide Drills.

ISO 9001
Registered
00812Q20262R0M

坐落于距离上海西北150km、乘坐高铁1个小时就能抵达的常州武进区。主打产品为硬质合金钻头及硬质合金/CBN/PCD刀片，及各种非标刀具满足客户的各种需求。

Located an hour from Shanghai by bullet train, about 150km (about 93miles) northwest of Shanghai. Core products are carbide drills, carbide/CBN/PCD inserts. This facility also deal with the wide ranges needs of our customers for customized tools.



硬质合金刀片
Carbide Inserts



硬质合金钻头
Solid Carbide Drills



CBN/PCD刀具
CBN/PCD Tools



非标刀具
Customized Tools

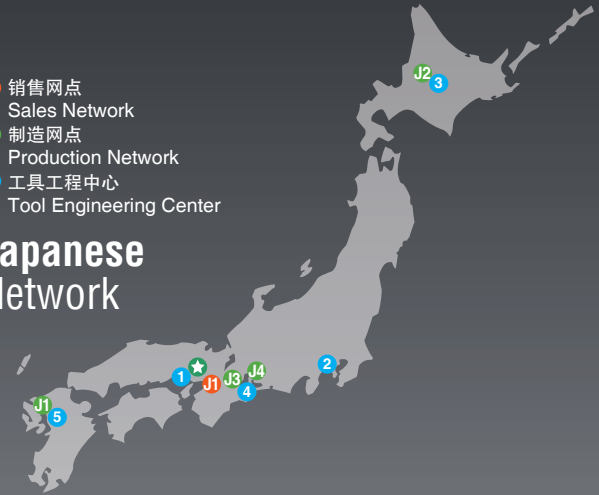
Network | 网络

除日本国内外，还以“积极开展海外活动”为经营方针，不断扩充销售网点的同时力求通过当地生产等方式推动海外市场的扩大。

Sumitomo Electric Hardmetal Corp. is strengthening its global position for high-quality products and services, while contributing technology to market needs around the world.

- 销售网点
Sales Network
- 制造网点
Production Network
- 工具工程中心
Tool Engineering Center

Japanese Network



销售网点 ■ Sales Network



住友电气工业株式会社 硬质合金事业部 住友电工硬质合金株式会社

(住友电气工业株式会社 伊丹制作所内)
[1960年设立, 2003年]
Sumitomo Electric Industries, Ltd.
Hardmetal Division
Sumitomo Electric Hardmetal Corp.
Head Office
[Established in 1960,2003 / Hyogo, Japan]

ISO 9001
认证通过注册编号
YKA0955989



住友电工工具网络株式会社

[1979年设立]
Igetalloy以及金刚石产品的销售与技术服务公司
Sumitomo Electric Tool Net, Inc. [Established in 1979]
Sales and marketing subsidiary for domestic Japanese market.



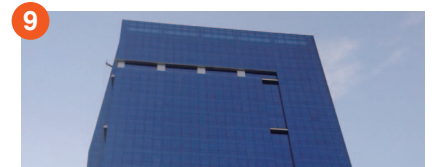
SEI Carbide Australia Pty Ltd

(澳大利亚/悉尼)[1977年设立]
澳大利亚销售公司
[Established in 1977 / Sydney, Australia]
Sales company in Australia



Sumitomo Electric Hardmetal Asia Pacific Pte Ltd

(新加坡)[1998年设立] 亚太销售公司
[Established in 1998 / Singapore]
Sales headquarters in Asia Pacific



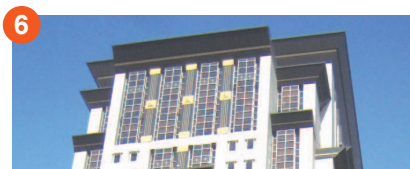
PT. Sumitomo Electric Hardmetal Indonesia

(印度尼西亚/雅加达)[2012年设立] 印度尼西亚销售公司
[Established in 2012 / Jakarta, Indonesia]
Sales company in Indonesia



Sumitomo Electric Carbide, Inc.

(美国/芝加哥)[1979年设立]
北美综合销售公司
[Established in 1979 / Chicago, U.S.A.]
Sales headquarters in U.S.A.



住友电工硬质合金贸易(上海)有限公司 Sumitomo Electric Hardmetal Trading(Shanghai) Co., Ltd.

(中国/上海)[2005年设立] 中国综合销售公司
[Established in 2005 / Shanghai, China]
Sales headquarters in China



SumiSertmetal Ticaret ve Sanayi Limited Şirketi

(土耳其/伊斯坦布尔)[2012年设立] 土耳其销售公司
[Established in 2012 / Istanbul, Turkey]
Sales company in Turkey



Sumitomo Electric Hartmetall GmbH

(德国/杜塞尔多夫)[1981年设立]
欧洲综合销售公司
[Established in 1981 / Düsseldorf, Germany]
Sales headquarters in Europe

ISO 9001
Registered
63960-2009-AQ-GER-TGA



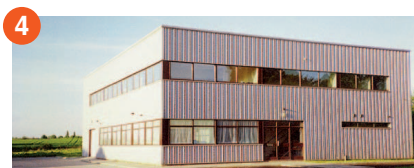
Sumitomo Electric Hardmetal de Mexico, S.A. de C.V.

(墨西哥/阿瓜斯卡连特斯)[2007年设立] 墨西哥销售公司
[Established in 2007 / Aguascalientes, Mexico]
Sales company in Mexico



Sumicarbide Canada, Inc.

(加拿大/多伦多)[2012年设立] 加拿大事务所
[Established in 2012 / Toronto, Canada]
Sales office in Canada



Sumitomo Electric Hardmetal Ltd.

(英国/伦敦)[1984年设立]
英国销售公司
[Established in 1984 / London, U.K.]
Sales company in U.K.



Sumitomo Electric Hardmetal do Brasil Ltda.

(巴西/坎皮纳斯)[2012年设立]
巴西销售公司
[Established in 2012 / Campinas, Brazil]
Sales company in Brazil



希都罗工具贸易(上海)有限公司 Superior Engineering Tool Trading (Shanghai) Co., Ltd.

(中国/上海)[2011年设立] 中国销售公司
[Established in 2011 / Shanghai, China]
Sales and Engineering service company in China



Global Network

- 销售网点
Sales Network
- 制造网点
Production Network
- 工具工程中心
Tool Engineering Center

制造网点 ■ Production Network



J1 九州住电精密株式会社 [1964年设立]
立铣刀以及印刷电路板加工用钻头、Igetalloy精密刀具、
CBN刀具的自动化量产工厂
Kyushu Sumiden Seimitsu Ltd.
[Established in 1964]
Production of PCB drills, endmills and CBN tools.

ISO 9001
认证通过注册编号
YKA0200075



J2 北海道住电精密株式会社 [1972年设立]
Igetalloy机夹式刀片的自动化量产工厂
Hokkaido Sumiden Precision Co., Ltd.
[Established in 1972]
Production of carbide inserts.

ISO 9001
认证通过注册编号
YKA0955804



J3 东海住电精密株式会社 [1984年设立]
多用途钻头等的自动化量产工厂和中京地区的服务功能
Tokai Sumiden Precision Co., Ltd.
[Established in 1984]
Production of Multidrill and other carbide tools.

ISO 9001
认证通过注册编号
YKA0200689



J4 株式会社Asdex [2002年设立]
开展从锻造模具的开发到制造·销售为止的所有业务的综合模具供应商
ASDEX Corporation
[Established in 2002]
Development, production and sales of forging dies.



1 Sumitomo Electric Hartmetallfabrik GmbH
(德国/劳恩海姆)[1989年设立]
欧洲生产工厂
[Established in 1989 / Lauchheim, Germany]
Manufacturing base in Europe

ISO 9001
Registered
QC-QM-Z-04
/019-001



2 Sumitomo Electric Carbide Manufacturing, Inc. SCM Division
(美国/密尔沃基)[1991年设立] 北美生产工厂
[Established in 1991 / Milwaukee, U.S.A.]
Manufacturing base in U.S.A.

ISO 9001
Registered
C2011-00371



3 Sumitomo Electric Hardmetal Manufacturing (Thailand), Ltd.
(泰国/曼谷)[1994年设立] 泰国生产工厂
[Established in 1994 / Bangkok, Thailand]
Manufacturing base in Thailand

ISO 9001
Registered
JQA-QMA12384



4 Motherson Techno Tools Ltd.
(印度/诺依达)[2005年参股]
印度生产工厂
[Participation in 2005 / Noida, India]
Manufacturing base in India

ISO 9001
Registered
IRQS1110261



5 Sumitomo Electric Carbide Manufacturing, Inc. Master Tool Division
(美国/克里夫兰)[2007年设立] 北美生产工厂
[Established in 2007 / Cleveland, U.S.A.]
Manufacturing base in U.S.A.



6 Sumitomo Electric Hartmetallfabrik GmbH, organizační složka.
(捷克/伊赫拉瓦)[2008年设立] 中东欧生产工厂
[Established in 2008 / Jihlava, Czech Republic]
Manufacturing base in Central and Eastern Europe

ISO 9001
Registered
CC-QM-Z-04/019-001



7 住友电工硬质合金(常州)有限公司
(中国/常州)[2011年设立]
中国生产工厂
Sumitomo Electric Hardmetal Manufacturing (Changzhou) Co., Ltd.
[Established in 2011 / Changzhou, China]
Manufacturing base in China

ISO 9001
Registered
00812C20262POM



8 PT. Sumiden Hardmetal Manufacturing Indonesia
(印度尼西亚/加拉横)[2012年设立]
印度尼西亚生产工厂
[Established in 2012 / Karawang, Indonesia]
Manufacturing base in Indonesia



工具工程中心 Tool Engineering Center [Opened in 2006 to 2012]

加工改善、培训等技术网店
The main center for tooling improvements and technical trainings.

- Domestic Network
 - 1 Itami
 - 2 Yokohama
 - 3 Hokkaido
 - 4 Tokai (Mie)
 - 5 Kyushu (Saga)
- Overseas Network
 - 6 Bangkok, Thai
 - 7 Shanghai, China
 - 8 Lauchheim, Germany
 - 9 Milwaukee, U.S.A.
 - 10 Karawang, Indonesia

- 日本国内
 - 1 伊丹工具工程中心(I-TEC)[2006年设立]
 - 2 横浜工具工程中心(Y-TEC)[2008年设立]
 - 3 北海道工具工程中心(HI-TEC)[2009年设立]
 - 4 东海工具工程中心(T-TEC)[2011年设立]
 - 5 九州工具工程中心(K-TEC)[2012年设立]
- 海外
 - 6 泰国工具工程中心(TI-TEC)[2006年设立]
 - 7 上海工具工程中心(S-TEC)[2011年设立]
 - 8 欧洲设计&工程中心(E-DEC)[2012年设立]
 - 9 美国工具工程中心(A-TEC)[2013年设立]
 - 10 印度尼西亚工具工程中心(In-TEC)[2013年设立]

■ 住友电工硬质合金贸易(上海)有限公司

地址: 上海市延安西路728号华敏·翰尊国际大厦6楼J座(邮编: 200050)
电话: 021-5238-1199 传真: 021-6212-9689

■ 住友电工硬质合金贸易(上海)有限公司广州分公司

地址: 广州市天河区林和西路3-15号耀中广场A座2221室(邮编: 510610)
电话: 020-3891-0442 传真: 020-3891-0449

■ 住友电工硬质合金贸易(上海)有限公司北京分公司

地址: 北京市朝阳区东三环北路3号幸福大厦B座1306室(邮编: 100027)
电话: 010-6468-8500 传真: 010-6468-9500

■ 住友电工硬质合金贸易(上海)有限公司大连分公司

地址: 辽宁省大连市开发区金马路128号天成国际金融中心807D(邮编: 116600)
电话: 0411-8792-6266 传真: 0411-8792-6277

■ 住友电工硬质合金贸易(上海)有限公司重庆分公司

地址: 重庆市江北区建新北路一支路6号未来国际大厦28-6室(邮编: 400020)
电话: 023-6785-7656 传真: 023-6785-7780

■ 住友电工硬质合金贸易(上海)有限公司成都分公司

地址: 成都市锦江区东大街紫东楼段11号东方广场A座2003号(邮编: 610016)
电话: 028-8445-6626 传真: 028-8443-6625

■ 住友电工硬质合金贸易(上海)有限公司长春事务所

地址: 长春市南关区人民大街207号(卫星广场)财富领域5A18A室(邮编: 130000)
电话: 0431-8191-6558 传真: 0431-8191-6559

■ 住友电工硬质合金贸易(上海)有限公司宁波分公司

地址: 宁波市江北区大庆南路99号来福士广场办公楼709室(邮编: 315020)
电话: 0574-8723-3856 传真: 0574-8723-3935

■ 住友电工硬质合金贸易(上海)有限公司青岛分公司

地址: 青岛市四方区山东路190号银华广场2栋212室(邮编: 266033)
电话: 0532-5578-7866 传真: 0532-5578-7865

■ 住友电工硬质合金贸易(上海)有限公司武汉分公司

地址: 武汉市武昌区水果湖楚河汉街·汉街总部国际C座1808室(邮编: 430077)
电话: 027-8711-0060 传真: 027-8711-0090

■ 住友电工硬质合金贸易(上海)有限公司厦门分公司

地址: 厦门市火炬高新区火炬园新丰三路16号401-B5(邮编: 362000)
电话: 0592-5602-190 传真: 0592-5602-195

■ 住友电工硬质合金贸易(上海)有限公司南京分公司

地址: 南京市秦淮区汉中路1号国际金融中心12楼D座(邮编: 210029)
电话: 025-8586-0803 传真: 025-8586-0881

■ 住友电工硬质合金贸易(上海)有限公司天津分公司

地址: 天津市空港经济区西四道168号融和广场5号楼2门905室(邮编: 300300)
电话: 022-8494-9495 传真: 022-8494-9493

■ S-TEC上海技术中心

地址: 上海市青浦区徐祥路158号2号楼3楼(邮编: 201702)
电话: 021-3988-5454

■ 住友电工硬质合金(常州)有限公司

地址: 江苏省常州市武进区技术产业开发区西湖路8号12号厂房(邮编: 213164)
电话: 0519-8622-0306 传真: 0519-8622-0305

<http://www.sumitool.com>(日文)

<http://www.sumitool.com/english>(英文)

<http://www.sumitool.com.cn>(中文)